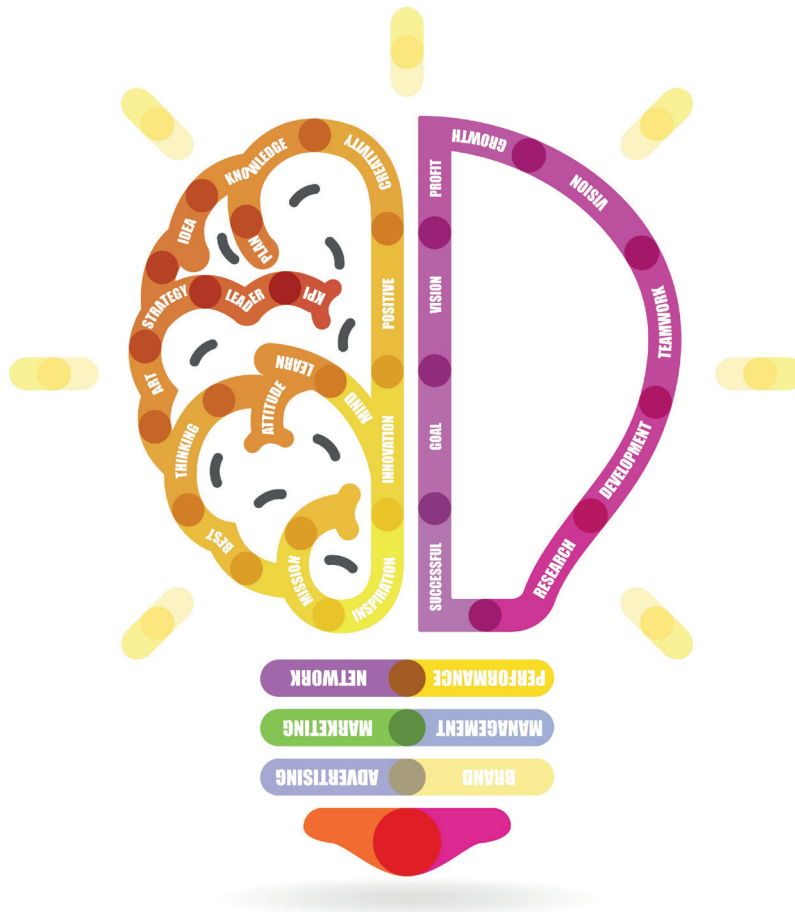


#SOCENTSPAs

SOCIAL ENTREPRENEURSHIP IN SPARSELY POPULATED AREAS

20th | 21st MAY 2016_EL HUECO_SORIA_SPAIN



#SOCENTSPAs

SOCIAL ENTREPRENEURSHIP IN
SPARSELY POPULATED AREAS

II EUROPEAN SOCIAL ENTREPRENEURSHIP AND SOCIAL FINANCE SPRING MEETING

For several reasons various European regions suffer from problems of low population density, especially in rural zones. These problems are usually compounded by the ageing of the population, and very few opportunities available for young people. These regions need to retain and bring in entrepreneurial talent, especially within the young people, in order to develop sustainable, economic, social and environmental initiatives which generate development and quality jobs.

Evidence suggest that social enterprises are more resilient and have the capacity to help correct the main socioeconomic misbalances, as well as benefiting the local communities. This makes the social economy a development model with special interest in alleviating the demographic problems in the SPAs (Sparsely Populated Areas) in Europe.

#SOCENTSPAs

SOCIAL ENTREPRENEURSHIP IN
SPARSELY POPULATED AREAS

II EUROPEAN SOCIAL ENTREPRENEURSHIP AND SOCIAL FINANCE SPRING MEETING

The main objective of this meeting is to serve as a meeting point between different actors within the most depopulated zones in Europe. The aim is to explore the possibilities offered through social entrepreneurship in order to alleviate this situation and to encourage the networking and exchange knowledge sharing.

This event will take place in Soria (Spain) which is one of the most depopulated geographical areas in Europe, with a population density of 9 habitants/ km². Organisations from different scarcely populated areas in the EU will participate, giving us a panoramic view of the depopulation phenomenon in the Union. They will show us their strategies to combat it, giving specific emphasis to the encouragement of social entrepreneurship as a tool for inclusive and sustainable development.

el hueco

OBJECTIVES

1

To analyze and reflect about the present and the future of social entrepreneurship in the European Union's countries, from different perspectives: legislation, finance, civil society, good practices, incubation initiatives, social entrepreneurs, etc.

2

To make the actions that promote social entrepreneurship clearer and more visible in scarcely populated zones in the EU.

3

To share the good practices and innovations in the European social funding sector which can be replicated in Spain.

#SOCENTSPAs

SOCIAL ENTREPRENEURSHIP IN
SPARSELY POPULATED AREAS

II EUROPEAN SOCIAL
ENTREPRENEURSHIP
AND SOCIAL FINANCE
SPRING MEETING

**FRIDAY,
20th MAY**

el hueco

20th MAY

09.00 | 09.30

Registration of participants

09.30 | 10.00

Official opening



Rosa Valdeón

Vice-president of the Castille and León Regional Government.



Cristina Dumitrescu

Microfinance Investment Manager at European Investment Fund.



Luis Rey

President of Soria Council.



María Teresa Vicente

Cives Mundi President.

20th MAY

II EUROPEAN SOCIAL
ENTREPRENEURSHIP
AND SOCIAL FINANCE
SPRING MEETING

20th MAY

Table I

10.00 | 11.15

Depopulation, social entrepreneurship and impact measurement



Crisis and opportunity in the depopulated areas in the EU.
Soria an example for change

Mercedes Molina Ibáñez

Professor of Human Geography at the 'Universidad de Complutense' in Madrid.



The EU's instruments to combat the depopulation: the integrated and interregional approach of Soria, Teruel and Cuenca

Santiago Aparicio Alcalde

President of the Castilla and Leon Confederation of Employers (CECALE).



Social enterprises in depopulated zones

Mercedes Valcárcel Dueñas

Director of Research, assessment and innovation at Tomillo Foundation.



MODERATOR

Carlos C. Carnicero Ungría
Journalist.

11.15 | 11.30

Coffee break

20th MAY

II EUROPEAN SOCIAL
ENTREPRENEURSHIP
AND SOCIAL FINANCE
SPRING MEETING

20th MAY

11.30 | 13.15

Table II

Social Entrepreneurship in scarcely populated areas in Europe

Organized by



→ Red emprenderverde



FONDO SOCIAL EUROPEO
El FSE invierte en tu futuro



Germany: Branderburg state.

Norbert Kunz

CEO of Social Impact.



Volker Offermann

Head of Unit "Women and labour market, Labour market and business start-up support", Land Brandenburg.



Scotland: Las Tierras Altas (Scottish Highlands).

Anne MacDonald

Head of Strengthening Communities Policy Team, Highlands and Islands Enterprise (HIE)



Finland: The Region of Lapland.

Kristiina Jokelainen

Lapland University of Applied Sciences (LUAS).



Greece: The area of Monte Olimpo. (Region of Thessaly).

Bellis Vassilis

General Director. Development Agency of Karditsa (ANKA).



MODERATOR

Fernando Rubio

Social entrepreneurship specialist. Entrepreneur eco-friendly.

20th MAY

II EUROPEAN SOCIAL
ENTREPRENEURSHIP
AND SOCIAL FINANCE
SPRING MEETING

20th MAY

13.15 | 14.15

Table III

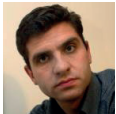
Encouragement of social entrepreneurship in rural areas in Spain



Paloma Colmenarejo
CEO Fresco y del Mar



Silvia Fernández-Campa. Empleaverde (use green) Program.
Empleaverde Program - FSE Coordinator
Biodiversity Foundation- Spanish Ministry of Agriculture, Food and Environmental Affairs.



Roberto Lozano. El Hueco Verde.
Director of the foundation Oxygen Foundation and responsible for El Hueco Verde.



Israel Manzano. Alma Natura.
Alma Natura, sustainable social entrepreneurship for rural population establishment.



MODERATOR

Marta Solórzano

Associate Professor at the Faculty of Economics and Business Administration of the Spanish National University of Distance Education and the director of the program of Social Entrepreneurship and Social Innovation.

14.15 | 15.30

Lunch

20th MAY

II EUROPEAN SOCIAL
ENTREPRENEURSHIP
AND SOCIAL FINANCE
SPRING MEETING

20th MAY

Table IV

15.30 | 17.00

Initiatives for the fostering social entrepreneurship in Soria (Spain)



Daniel Hernández Marín. El Hueco coordinator.

El Hueco is a program promoted by the NGO Cives Mundi, whose objective is to encourage social entrepreneurship in Spain.



Lucía Fernández de Soto. Fermento Medinaceli Coordinator.

Project Seedbed created to connect the youth initiatives of Medinaceli surroundings, to support them in their development and to attract new proposals.



Pedro Medrano. Manager of ASFOSO.

Presentation of the rural entrepreneurs' incubation program which held in collaboration with the Foundation Biodiversity.



Sergio Cabrerizo. Director of Soria Futuro.

Presentation of IMPUL_SO's social enterprises acceleration program, which has been developed in collaboration with El Hueco.



MODERATOR

Javier Gracia

Responsible for the companies participating with the bank 'Caja Rural de Soria'.



MODERATOR

Juan P. Velázquez-Gaztelu

Journalist for the Alternative Economics magazine.

17.00 | 17.30

Presentation of the meeting final conclusions



Alfred Vernis

Co-founder of the Social Innovation Institute at ESADE and director of the Momentum Project. Professor of the Strategy Department at ESADE-URL.

20th MAY

II EUROPEAN SOCIAL
ENTREPRENEURSHIP
AND SOCIAL FINANCE
SPRING MEETING

#SOCENTSPAs

SOCIAL ENTREPRENEURSHIP IN
SPARSELY POPULATED AREAS

II EUROPEAN SOCIAL
ENTREPRENEURSHIP
AND SOCIAL FINANCE
SPRING MEETING

**SATURDAY,
21st MAY**

el hueco

21st MAY

09.00 | 14.00

SOCIAL ENTREPRENEURSHIP

On-Site visit one of the following social enterprises based in Soria (you may choose)



Megara Energía.

www.megaraenergia.com

Cooperative of energy users and consumers. Their objective is trading commercialization of Soria's energy from renewable sources. There will be a visit to the wind turbine park run by the Sorian company CETASA, in the Oncala area.



Cooperative La Noguera

www.lanogueramedinaceli.es

The Cooperative 'La Noguera Medinaceli' aims to promote integral rural development in Medinaceli (Soria) through land management, integrating the cultural, environmental, social and economical dimensions... a return to sustainability, rebuilding values related to craftwork, the wisdom of work and of the Earth. Medinaceli and Arbujuelo localities will be visited.



La Exclusiva

www.laexclusiva.org

La Exclusiva, social logistic is "the shop of the villages without shops", a social enterprise whose objective is to reduce the depopulation in the province of Soria. It provides basic products and services to the inhabitants of rural zones who don't have them available in their area. The participants will accompany a delivery person of La Exclusiva on one of its routes through the South East of the province.



Huertos de Soria

www.huertosdesoria.org

Huertos de Soria is an organisation which aims to generate employment for people at risk of social exclusion through the cultivation and commercialisation of organic vegetables. Visit to the Las Corralizas farm in the Fuentepinilla area.



Montes de Socios

www.montesdesocios.es

This project seeks to recuperate and assess the 'Montes de Socios' (collective ownership) and through this, contribute to economic development, to modernisation and to the improving of the quality of life in the rural environment. Visit to the "Mountain of the Conde Society", in the La Poveda area.



Anillo Celtibérico

www.anilloceltibérico.com

Aim to generate income in rural areas by taking advantage of the natural resources available in order to develop sports tourism through the advancement of existing forest tracks, creating footpaths and roads with the aim of improving the accommodation of the seasonal tourist traffic.

**II EUROPEAN SOCIAL
ENTREPRENEURSHIP
AND SOCIAL FINANCE
SPRING MEETING**

21st MAY

#SOCENTSPAs

SOCIAL ENTREPRENEURSHIP IN
SPARSELY POPULATED AREA

II EUROPEAN SOCIAL
ENTREPRENEURSHIP
AND SOCIAL FINANCE
SPRING MEETING

HOW TO ARRIVE TO SORIA

el hueco

HOW TO ARRIVE

BY PLANE

To arrive to Soria from Adolfo Suárez Airport - Madrid Barajas there is a bus stop of ALSA Company that picks you up right at the T4. You can arrive by plane to Madrid to any terminal, and in each of them, there are some airport buses that will take you from one terminal to another. There is a stop in T4, which is indicated. The bus makes its stop and takes the traveler to the bus station of Soria, without the need to go to the bus station in Madrid centre. It is a comfort. In this link you can check the schedules: <http://www.alsa.es/>. You just have to put the date, select "One way and / or Round trip" and the information will be at your fingertips.

BY TRAIN

If you want to come to Soria in a more comfortably way and you prefer the train, you can only access to Soria by this means of transport if you come from Madrid. The train leaves from Madrid Chamartin station. Station Address: Calle Agustín de Foxa s / n 28036 Madrid (Madrid). In this link you can check the schedules: <http://www.renfe.com/>. You just have to put the date, select "One way and / or Round trip" and the information will be at your fingertips.

HOW TO ARRIVE

BY CAR

If you come from Valladolid and you want to take the car, you should take the road N-122 and you must follow the signs. The estimated travel time is about 2h 30min. Conversely, if you prefer coming from Madrid, you should take the A-2 and A-15 road or A-1 and N-110 road and you must follow the signs. The estimated travel time is about 2h 15min.

If you come from Barcelona, you should take the AP-2 or A-2 road and you must follow the signs. The estimated travel time is about 4h 25min.

However, if you come from Zaragoza, you should take the AP-68 and N-122 road; the A-2 and N-234 road or AP-68 road and you must follow the signs. The estimated travel time is about 1h 50min.

BY BUS

On the other hand, if you prefer travelling in a more convenient way and you want to come by bus, here are several possibilities:

If you proceed from Madrid, there are several schedules. The station from where these buses leave is Avenida de América Station. You can check here the bus schedule: <http://www.alsa.es/>. You just have to put the date, select "One way and / or Round trip" and the information will be at your fingertips. The bus station is located at: Avenue América 9 28002 Madrid (Madrid). It is accessible by underground lines 4, 6, 7 and 9. However if you proceed from Zaragoza there is also an extense schedule. The station where you can take these buses it is Delicias Station. There are two different of companies: Linecar or Therpasa.

HOW TO ARRIVE

You can check here the bus schedule: <http://www.therpasa.es/horarios.php>

You have just put the date "One way and / or Round trip" and your information is at your fingertips.

You can also call to the information number of the station: 976 700 599

The bus station is located at: Calle Rioja, 50011- 33 Zaragoza (Zaragoza)

If you come from Valladolid, there are several bus schedules. The station from where they leave is the bus station of Valladolid. You can check here the bus schedule:

www.caminosoria.com/servicios/transportes/autobuses/1940-autobuses-valladolid-soria-zaragoza.html. You just have to put the date, select "One way and / or Round trip" and the information will be at your fingertips. The companies you should choose are Therpasa and Linecar. The last one company has more availability. You can also call to the information number of the station: 983 236 308. The bus station is located at: Puente Colgante 2, 47007 Valladolid (Valladolid). If you come from Barcelona it must make an exchange in the city of Zaragoza. The station where you can take these buses, it is the Nord bus station. TYou can check here the bus schedule:

<https://www.barcelonanord.cat/es/inicio/>. You just have to put the date, select "One way and / or Round trip" and the information will be at your fingertips. You can also call to the information number of the station: 902 260 606 The bus station is located at: Carrer d'Ali Bei, 8008013 Barcelona (Barcelona). You can also reach the station as follows Underground: L1, stop Arc de Triomf | TMB Bus: number 54 | Renfe: Tren cercanias, lines 1, 3 and 4.

#SOCENTSPAs

SOCIAL ENTREPRENEURSHIP IN
SPARSELY POPULATED AREAS

II EUROPEAN SOCIAL
ENTREPRENEURSHIP
AND SOCIAL FINANCE
SPRING MEETING

**MORE
INFO**

el hueco

MORE INFO

<http://www.elhueco.org/socialmeeting/>

¿HOW TO GET THERE?

EL HUECO. Eduardo Saavedra 38. 42002. Soria (Spain)



FREE ACCESS / LIMITED PLACES
COFFE + LUNCH + DOCUMENTATION

20 €

SIMULTANEOUS INTERPRETATION
ENGLISH/SPANISH/ENGLISH

CONTACT:
INFO@ELHUECO.ORG
TFNO: +34 975229950
WWW.ELHUECO.ORG

II EUROPEAN SOCIAL
ENTREPRENEURSHIP
AND SOCIAL FINANCE
SPRING MEETING

MORE INFO

Organized by:



Cooperate:



Fundación Biodiversidad

....> Red emprenderverde

AVAVavenia

isis capital

Caja  **Soria**
rural de